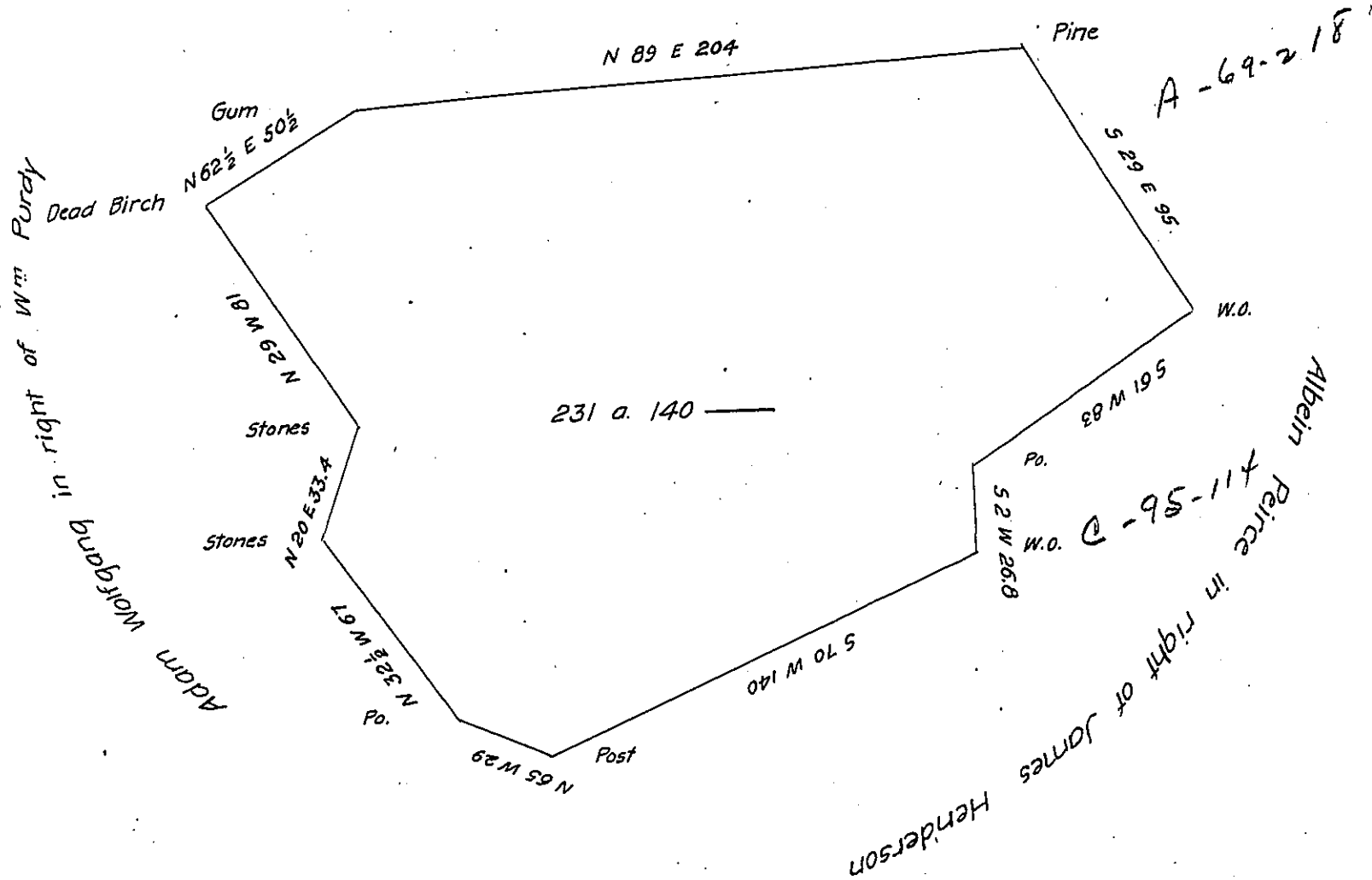


Shade Mountain



Draught of two hundred and thirty one acres one hundred and forty Perches of land with allowance of six per cent for roads &c

Situate in Fayette Township Juniata County being a part of a tract of land warrant to Charles Clark for 256 a. dated the 21st January 1794 surveyed upon an order of resurvey <sup>dated</sup> 9<sup>th</sup> of March 1833 to Benjamin B. Reynolds surveyed this 26<sup>th</sup> & 30<sup>th</sup> days of March 1860 for W<sup>m</sup> Noble and John B. Porter for the purpose of getting a Patent.

To J. Rowe Esqr.

T. M. Kirk C.S.

Surveyor General of Pennsylvania.

Approved the above survey this 31<sup>st</sup> day of March A. D. 1860.

G. W. Jacobs C.S.

IN TESTIMONY that the above is a copy of the original remaining on file in the Department of Internal Affairs of Pennsylvania, made conformably to an Act of Assembly approved the 16th day of February, 1833, I have hereunto set my Hand and caused the Seal of said Department to be affixed at Harrisburg, this thirty-first day of October 1904.

*Grace D. Brown*  
Secretary of Internal Affairs.